

250 CITIES. 40 COUNTRIES.  
ONE AIRLINE.



No matter where you need to be in the world, your first stop should be American Airlines. And now, as the only airline with more room throughout Coach for more Coach passengers, you can always travel in comfort. So if you want to see the world, or just make it to your next meeting, you can be sure American and American Eagle<sup>®</sup> can get you there. For reservations, visit [AA.com](http://AA.com)<sup>®</sup>; or call your Travel Agent or American at 1-800-433-7300.

**American Airlines<sup>®</sup>**

American Airlines, American Eagle and AA.com are marks of American Airlines, Inc. American Eagle is American's regional airline affiliate. Only American has removed seats throughout Coach to provide more room for more Coach passengers than any other airline; not available on American Eagle. Schedules subject to change.

# PLAYBILL

SUMMER 2003



*Gateway*  
PLAYHOUSE



# MAZZEI'S

RESTAURANT ▾ BAR ▾ CATERING

PRIME AGED STEAKS • PASTAS • SEAFOOD

*The New Sophisticated Restaurant That Becomes A Dance Club After 11:30 p.m.*

OPEN FOR LUNCH MONDAY - FRIDAY

OPEN 7 DAYS A WEEK

- *Live Music  
Nightly*
- *Neat Casual  
Attire*
- *Casual Dining  
at the Bar*



- *Catering up to 100*
- *Elegant Dining in  
Main Room*
- *DJ after 11:30 p.m.*
- *Please 28 and  
over after 11:30 p.m.*
- *Outside Patio for  
your Dining Pleasure*

363-6666

7 MONTAUK HIGHWAY • BLUE POINT

WWW.MAZZEIS.COM

W<sup>m.</sup> J. O'Neill

*Sales Exchange Co., Inc.  
Jewelers and Collateral Loanbrokers*



*Classic and Contemporary  
Platinum and Gold Jewelry designs  
that will excite your senses.*

*One East Main St., Patchogue 631.289.9899*

*Mention this ad for 10% discount on purchase*



Open for Lunch & Dinner  
Tuesday through Sunday

# LOUIS XVI

Reservations  
Recommended



Voted the No. 1 restaurant overall on LI, as well as No. 1 for Decor – devotees swear it could rival “the Palace of Versailles” – this “extravagant”, “elegant” and “exquisite” “crown jewel” boasts “gorgeous views” of Great South Bay from its “beautiful setting on the water” in Patchogue; indulge in “extraordinary”, “imaginative” New French cuisine “magnificently presented” by an “impeccable” staff; dip into the “kids’ college fund” or “mortgage the house” if you must, but it’s “worth every franc” for such an “incredible dining experience.”

– Zagat Survey 2000 26| 28| 25| \$57|

600 South Ocean Avenue • Patchogue, 654-8970

## THE HARBOR SIDE

“Incomparable Seafood Restaurant”

Open 7 Days a Week  
at 11:30 a.m.

All Major Credit  
Cards Accepted.

Complete Dinners  
Everyday.



Highly Recommended:

\*\*\*

Newsday

Daily News

NY Post

The Practical Gourmet

### Complete Lunches\*

Served Mon. - Sat.  
11:30 a.m. - 3:30 p.m.  
Starting at \$7.95

### Complete Early Bird Specials\*

Served Mon. - Fri. 3:30 p.m. - 5:45 p.m.  
Sat. 3:30 p.m. - 5:30 p.m.  
Sun. 11:30 a.m. - 4:00 p.m.  
Starting at \$13.95

### Sunday Specials

Includes: Soup or Salad,  
Potato, Vegetable, Dessert & Coffee.  
11:30 a.m. - 4:00 p.m.  
Starting at \$9.95

\*Above specials not available for groups of 15 or more on holidays. Prices subject to change.

Special Rates for Theatre Groups from 20 to 125. Call for more information.

503 E. Main Street, Patchogue, New York

Located on the corner of E. Main St. (27A) and Phyllis Dr. • (631) 654-9290

Complete Dinners starting at  
\$18.95 includes appetizer,  
soup or salad, potato,  
vegetable, dessert & coffee

Announcing...

## Gateway's Holiday Spectacular

at the Patchogue Theatre

December 19 - 31

New for 2003

In the spirit of the  
Radio City  
Christmas Spectacular...

Singing, Dancing,  
Specialty Acts and  
All Your Favorite  
Holiday Songs!

Tickets on Sale now



## Children's Theatre

### Cinderella

Live Musical Show!

All Seats \$8.00

YATES MUSICAL THEATER

Patchogue Theatre August 22 - Fri. 10:30 a.m. and 1:00 p.m.



Phone orders are accepted. Remaining tickets will  
be sold at the door, the morning of the show.  
Sorry, Children ages 2 and older only - No Infants Please.  
Shows subject to change without notice.

**ON SALE  
NOW!**

FOR TICKETS CALL 631.286.1133 OR 1-888-4TIXNOW  
OR LOG ON TO WWW.GATEWAYPLAYHOUSE.COM



**American Airlines**  
Official Airline for the Gateway Playhouse





## Dr. Melissa Costanza

Chiropractor

### Gentle Chiropractic Care & Nutrition

For The  
Entire Family

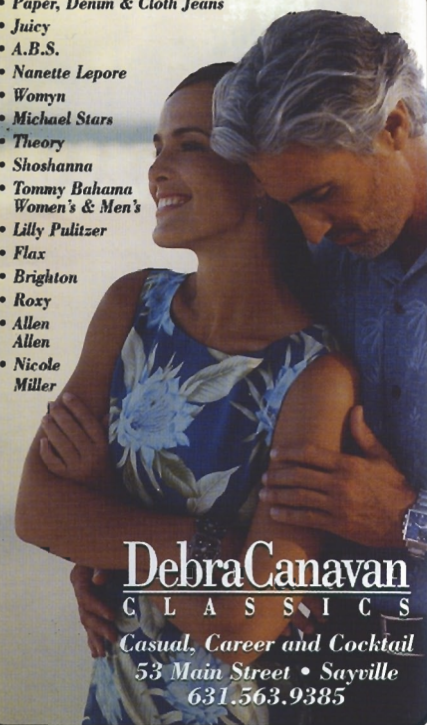
Including:

- Adults
- Children
- Infants
- Individuals with special needs addressed

Melissa Costanza, D.C.  
Claudia Taylor, D.C., P.C.  
366 South Country Road  
Brookhaven, New York 11719

631-286-5858

- Paper, Denim & Cloth Jeans
- Juicy
- A.B.S.
- Nanette Lepore
- Womyn
- Michael Stars
- Theory
- Shoshanna
- Tommy Bahama Women's & Men's
- Lilly Pulitzer
- Flax
- Brighton
- Roxy
- Allen Allen
- Nicole Miller



Debra Canavan  
CLASSICS

Casual, Career and Cocktail  
53 Main Street • Sayville  
631-563-9385

COLDWELL  
BANKER

## BELLBROOK REALTY, INC.

440 South Country Road, East Patchogue

289-4000

*Expect the Best!*

Hometown Realtors Selling  
Hometown Real Estate

Jeanne Clarke - Lic. Assoc. Real Estate Broker  
Joanne Celauro - Lic. Real Estate Salesperson  
Mile Bilello - Lic. Real Estate Salesperson  
Shelley Bartlett - Lic. Real Estate Salesperson  
Ted Daniels - Branch Mgr., Lic. Assoc. RE Broker

Celebrating our 30th Anniversary  
www.bellbrookrealty.com **MLS**



- Featuring the freshest seafood, live lobster and prime steaks, as well as our traditional fare
- The Pavilion Room is now open for lunch every day from 11:30, featuring our new lunch menu and our expanded casual menu
- Live entertainment every Saturday night with Jacques W. LeBas performing songs from Broadway and Sinatra



Open for Lunch and Dinner  
Seven Days a Week

Pre- and Post-theatre specials available  
Monday through Friday until 5:30,  
Saturday until 4:30 and Sunday until 4:00

Join us after the late performances Friday and  
Saturday - our kitchen is open until midnight



Chapel Avenue & First St.  
Patchogue NY 11772  
631-475-9843

www.pinegroveinn.com



# CAVANAUGH'S

"Let's Have Fun" Est. 1986

◆ New Smoke-Free Dining Room ◆

Serving Lunch Daily Starting at 11:30

Dinner Served Every Night

Dining Room Open Sunday - Thursday Till 11 PM

Friday And Saturday Till 12 Midnight

## DINING SPECIALS

Mondays - 2 For 1 Chicken Wings

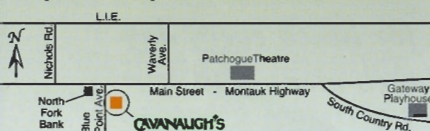
Tuesdays - 20 Oz. Porterhouse \$11.99

Thursdays - Prime Rib \$11.99

## Kitchen Open

Sunday - Thursday Till 12 Midnight

Friday and Saturday Till 2 AM • 19 TVs - Quick Draw



255 Blue Point Avenue, Blue Point  
631-363-2666

# Swezey

FUEL CO., INC. - EST. 1919

## Suffolk's Largest Family Owned Oil Company

- Automatic Oil Delivery Service
- 24-Hour Emergency Service
- Budget Plans That Pay You Interest
- Expert Installation Of Boilers, Burners, Hot Water Heaters & Pool Heaters



# 475-0270

51 RIDER AVE., PATCHOGUE

# Gateway PLAYHOUSE

presents

PAUL NAKAUCHI

SUZANNE ISHEE

in

Rodgers & Hammerstein's

# THE KING AND I

Music by

RICHARD RODGERS

Book and Lyrics by

OSCAR HAMMERSTEIN II

Based on the novel

"Anna and the King of Siam" by  
MARGARET LANDON

Original Choreography

by  
JEROME ROBBINS

with

ENRIQUE ACEVEDO

SCOTT KITAJIMA

MICHEAL MCKENZIE

YOON-JEONG SEONG

WEN ZHANG

Producer

PAUL ALLAN

Associate Producer

JEFF BELLANTE

General Manager

GALE EDWARDS

Artistic Director

ROBIN JOY ALLAN

Company Manager

STANLEY SCHORR

Production Manager

STACY COOPER

Production Stage Manager

JOVON E. SHUCK

Costume Coordinator

MARIANNE DOMINY

Costume Design

STEPHEN HOLLENBECK

Sound Design

GREG REIF

Lighting Design

MARCIA MADEIRA

Sets and Properties Designed by

XU ZHENG HE

Provided by Music Theatre of Wichita

Choreography

SHARON HALLEY

Musical Direction

VINCENT TROVATO

Directed By

BOB DURKIN

The King & I is presented through special arrangement with The Rodgers and Hammerstein Theatre Library,  
1065 Avenue of the Americas, Suite 2400, New York, New York 10018.



## Family Chiropractic

Dr. Dennis O'Hara

Call today for your FREE Spinal Exam

(Free exam does not include x-rays)

# 286-2300

16-2 Station Road, Bellport, NY 11713

[www.bellportchiropractic.com](http://www.bellportchiropractic.com)



## Bellport Orthodontics

Braces for Children and Adults

- Free Consults for Children
- Preventive early childhood treatment
- Clear and invisible braces available
- Major credit cards accepted
- Payment plans available
- Most insurance plans accepted

Dennis Angelillo, DDS 286-7651

1 Station Ct. (formerly 30 Station Rd.), Bellport • Located in the Village of Bellport



## CAST OF CHARACTERS

(In Order of Appearance)

Captain Orton .....MICHAEL MCKENZIE\*  
 Louis Leonowens .....BRENDAN DOOLING  
 Anna Leonowens .....SUZANNE ISHEE\*  
 The Interpreter .....DAVID CHO\*  
 The Kralahome .....SCOTT KITAJIMA  
 The King .....PAUL NAKAUCHI\*  
 Phra Alack .....JONATHAN LEE\*  
 Lun Tha .....ENRIQUE ACEVEDO\*  
 Tuptim .....YOON-JEONG SEONG  
 Lady Thiang .....WEN ZHANG\*  
 Prince Chululongkorn .....PAUL BISAGNI  
 Sir Edward Ramsay .....MICHAEL MCKENZIE\*  
 Ying Yaowlak .....CAROLINE FUNG  
 Ensemble .....ALDRIN ARCHE, DAVID CHO\*, MICHELE CHUNG, EDWARD DIAS,  
 SHUWEN HSIEH, KUMI KIMURA, KUMIKO KOBAYASHI, JONATHAN LEE\*,  
 SUMIE MAEDA, AKEMI MATSUBARA, AKIKO ELLIS MATSUMOTO,  
 SAEKO NARUSE, MICHIKO TAKEMASA\*  
 Young Wives and Royal Children .....OLIVIA ANDRUNIK, KATERINA APOSTOLICO,  
 NICASIA BEEBE-WANG, PAUL BISAGNI, ALANNA CHAN,  
 BRENDAN CHAN, YASMINE FLODIN-ALI, CAROLINE FUNG,  
 MARGUERITE JONES, MARIAH KERINS, ALEXIE BREA LESSING,  
 MADISON MULVEY, DEVIN NELSON, SHANICE O'BRIEN,  
 SPENSER LEE CARRION-O'DRISCOLL, AJAY PERSAUD, BETHANY WENIGER

## UNDERSTUDIES

Understudies never substitute for listed players unless a specific announcement is made at the time of the performance.

The King .....SCOTT KITAJIMA\*  
 Anna .....ANN VAN CLEAVE\*  
 Kralahome, Lun Tha .....ALDRIN ARCHE  
 Lady Thiang .....SHUWEN HSIEH  
 Ramsey/Capt. Orton .....STANLEY SCHORR\*

## THE ORCHESTRA

Conductor/Keyboard .....VINCENT TROVATO  
 Keyboard .....BRYAN WADE  
 Reeds .....SARAH LOVELAND BELL,  
 MIKKI RYAN, LARRY WOODALL  
 Trumpet .....RICH CRUZ, KYLE LANE  
 Trombone .....DIANE HOFFMAN  
 Bass .....RANDALL KLITZ  
 Percussion .....PETE DESALVO



The Musicians employed in this production are members of the American Federation of Musicians.



\*Actors employed in this production are members of Actors' Equity Association, the union of Professional Actors and Stage Managers in the United States.

ssdc

The Director/Choreographer is a member of the Society of Stage Directors and Choreographers, Inc., an independent national labor union.

Playbill Designed and Printed by Searles Graphics, Inc.

## The Cast



Enrique Acevedo



Aldrin J. Arche



Paul Bisagni



David Cho



Michele Chung



Edward Dias



Brendan Dooling



Shuwen Hsieh



Suzanne Ishee



Mya Jung



Kumi Kimura



Scott Kitajima



Kumiko Kobayashi



Jonathan Lee



Sumie Maeda



Akemi Matsubara



Akiko Matsumoto



Michael McKenzie



Paul Nakauchi



Saeko Naruse



Yoon-Jeong Seong



Michiko Takemasa



Wen Zhang





Lunch & Dinner - Indoor/Outdoor  
363 Grove Ave. Patchogue 631-758-3524  
(closed Mondays)



PHOENIX  
FINE ARTS  
GALLERY  
LLC

One Thirty-nine Main Street, Bellport, NY 11713  
(631) 776-0811  
Representing Long Island Artists

## Swan Bakery

All Occasion Cakes

Guy Gagliano

The Official Bakery of Gateway Playhouse

15 South Country Rd., East Patchogue, NY 11772  
(631) 475-9626

## Before or After The Show

Late Night Dinner • Dessert and Coffee

All Baking  
Done On  
Premises



Breakfast,  
Lunch and  
Dinner

Open 7 Days  
6:00 AM - 2:00 AM

Daily Specials

## ROYAL OAK

Diner - Restaurant

Station Road and Sunrise Highway - Bellport, New York 11713

TEL. (631) 286-5757

## MUSICAL NUMBERS

Overture .....Orchestra

### ACT I

"I Whistle a Happy Tune" .....Anna, Louis  
"My Lord and Master" .....Tuptim  
"Hello, Young Lovers" .....Anna  
"A Puzzlement" .....The King  
"Getting to Know You" .....Anna, Louis, Royal Children  
"We Kiss in a Shadow" .....Lun Tha, Tuptim  
"A Puzzlement" Reprise .....Louis, Chululongkorn  
"Shall I Tell You What I Think of You?" .....Anna  
"Something Wonderful" .....Lady Thiang  
"Something Wonderful" Reprise .....Lady Thiang

### INTERMISSION

Entr'acte .....Orchestra

### ACT II

"Western People Funny" .....Royal Wives  
"I Have Dreamed" .....Lun Tha, Tuptim  
"Hello, Young Lovers" Reprise .....Anna  
"The Small House of Uncle Thomas" (Ballet) .....Tuptim, Ensemble  
"Song of the King" .....The King, Anna  
"Shall We Dance?" .....The King, Anna  
"I Whistle a Happy Tune" Reprise .....Anna

*The Colony Shop*  
The Finest In Children's Wear



Christening and Wedding  
Attire for Children

32 West Main Street, Patchogue 631-475-0070

**RULAND**  
Funeral Home, Inc.

Dignified & Affordable Funerals Since 1856

The Romeo Family is  
Proud to Support the  
Arts that Enrich Our Lives

**475-0098**

500 N. Ocean Ave., Patchogue, NY 11772



## Who's Who...

## Who's Who...

**ENRIQUE ACEVEDO** (*Lun Tha*) has toured Europe in *Jesus Christ Superstar* (Judas), and in *Grease* (Danny), and toured the United States in *West Side Story* (Bernardo, Drama-Logue Award) and *The King & I* (Lun Tha). Regionally; *Paint Your Wagon* (Julio, Drama-Logue Award), *Camelot* (Scottish Soloist). Readings: *The Altar Boyz* (Juan). Recently appeared as a featured soloist in the Off-Broadway production of *Latin Heat*.

**ALDRIN J. ARCHE** (*Ensemble/u/sKralahome/u/sLun Tha*) returns to the Patchogue Stage after appearing in Gateway's production of *Miss Saigon*. Aldrin is a native "Michigander" where he received a BA in Musical Theatre from Oakland University. Other New York credits include *Copacabana* (Bolero Dancer) and *The King & I* (Lun Tha). Audiences can see him this coming winter season at Naples Dinner Theatre, Florida, in the role of Ito in *Mame*. He would like to thank his family, friends, and especially Mike, for all their love and support.

**DAVID CHO** (*Interpreter/Ensemble/Dance Captain*) is a native of Hong Kong. Credits: Tours First National *The King & I* (Uncle Thomas); European *Jesus Christ Superstar* (Dance Captain); RCCL. NY Stage *Amahl & The Night Visitors* (Lincoln Center), *Remarkable Journey of Prince Jen* (Abingdon Theatre). Regional Downtown Cabaret *The King & I* (Interpreter). M.F.A., Dance, Tisch, NYU.

**MICHELE CHUNG** (*Ensemble*) A student at the University of the Arts in Philadelphia, Michele is currently pursuing a BFA in Dance. She was also a scholarship student at the Martha Graham School of Contemporary Dance. Her performance credits include Doris Humphrey's *Shakers* and an appearance with the White Oak Dance Project during their performance in Philadelphia.

**EDWARD DIAS** (*Ensemble*) is pleased to finally be making his Gateway debut. He has been kicking and pirouetting his way across Europe in *Jesus Christ Superstar*, the U.S. in *Miss Saigon*, and now Gateway's Patchogue stage in *The King and I*. Muchos Mahalos Kristi, Erick and family.

**BRENDAN DOOLING** (*Louis*) is thrilled to be a part of the musical production *The King and I*. He has been studying at the Gateway Acting School for three years and plans to continue. Brendan recently finished *Godspell*, a small stage production as Jesus. Last summer he participated in the Children's Theater's *Pinocchio* and the main stage *Jesus Christ Superstar* as young Jesus. Brendan has always enjoyed the view from on and off the stage and he hopes to expand his acting career further.

**PAUL BISAGNI** (*Chululongkorn*) age 13, has been attending Gateway Acting School since age 6. There's no other place he'd rather be! *The King and I* marks Paul's 17th production at Gateway, and he is thrilled

to be a part of it! Favorite roles include *Will Roger's Follies* (Will Jr.), *Winnie the Pooh* (Christopher Robin), and *Titanic* (Jack Thayer). Many thanks to his Gateway teachers Terry and Michael, and a A VERY SPECIAL THANK YOU to Robin.

**SHUWEN HSIEH** (*Ensemble/u/sLady Thiang*) is thrilled to join this wonderful cast. Her recent work includes — Off-Off Broadway: *Decade*, *The Real World Salem Massachusetts 1692*, *Momentary Delay*; Regional: *Kokoro* (Shizuko), *The Mikado* (Yum-Yum), *The King & I* (Tuptim, Lady Thiang); Rome Opera Festival: *The Magic Flute* (the Queen of Night). Much love to family and Buddha.

**SUZANNE ISHEE** (*Anna*) is delighted to return to Gateway Playhouse after having played the title role in *Kiss Me Kate* earlier this season. She has appeared as Carlotta in Andrew Lloyd Webber's *Phantom of The*

*Opera* in both the New York and Toronto productions. Other Broadway appearances include *Showboat*, *La Cage Aux Folles* and *Mame* with Angela Lansbury. She played in the national tours of *Jerry's Girls* with Jerry Herman and Carol Channing (original soundtrack recording-Jay Records) and *The Wizard of Oz* as Glinda. Favorite regional credits include, Grace in *Annie* with Harve Presnell, Sarah in *Guys and Dolls* with Joe Namath, Margot in *Desert Song*, Christine in *Phantom*, Anacaona in the world premiere of the opera, *1492* (original soundtrack -Bongiovani), and next she will play Eleanor in *Lion in Winter*. Off-Broadway, she played Mistress Squeamish in the American premiere of the musical *Lust* and made her New York City Opera debut in *The Merry Widow* broadcast on PBS. Miss Ishee is an EMMY and Drama Desk Award winning producer. She created and for eight years produced Broadway's Easter Bonnet

## PAPA NICKS PIZZA



Gyros, Salads, Heros, Dinners  
Daily Lunch Specials

286-6400

117C-South Country Road, Bellport Village, NY

## A.G. Edwards & Sons, Inc.

Serving Investors Since 1887

Stocks • Bonds • Mutual Funds • CDs • IRAs  
Options • Insurance • Annuities • Financial Planning

Richard B. Miller

Vice President - Investments  
Antoinette R. Giordano, MBA

Senior Registered Financial Associate

Trusted Advice - Exceptional Service

222 East Main Street, Smithtown, NY 11787

631-265-1400 x 252 • 800-348-3420 x 252

richard.miller@agedwards.com

Member New York Stock Exchange, Inc.

Ad Number LM-52-0404-EUP

# We'd like to drop a few names.

  
**ROLEX**

  
CHARLES GARNIER

**MÉMOIRE**

**SUSYMOR**  
JEWELRY DESIGNER

  
**TAGHeuer**  
SWISS MADE SINCE 1860

  
**MONT  
BLANC**

**BAUME & MERCIER**  
GENEVE - 1830

  
LYNN CHASE  
DESIGNS

  
MAURICE LACROIX  
Switzerland

  
**ROSE**  
JEWELERS  
CELEBRATING LIFE'S EVENTS SINCE 1945

**LINKS**  
LONDON

**J.J. MARCO**

COLOR STORY™  
BY  
ROBERT LESER

**Peter Storm**  
DESIGNS

  
D'ELIA  
TASAKI

  
WATERFORD  
FINE CHINA

SOUTHAMPTON: 57 MAIN STREET, 631-283-5757 / PATCHOGUE: 74 EAST MAIN STREET, 631-475-1441





*Richard York*

OF PATCHOGUE



631-475-1047  
14 South Ocean Ave.  
Patchogue  
Four Stores  
South of Main St.

**Quality Footwear for the Entire Family Since 1927**

- Helpful, Friendly Service
- Areas Largest Selection of Sizes & Widths AA-EEEE

Rockport, Easy Spirit, Florsheim, New Balance, Stride Rite, Teva, Timberland, Skechers, Munro, Dexter, Keds, Reebok, Dyeables, Topsider, Soft Spots, Clarks, Naturalizer, Hush Puppies, Daniel Green, Foamtreeds, etc.

**10% OFF** any purchase with ad only

Excludes Easy Spirit, Dr. Martens & other offers. Expires 12/31/03

**FRANK R. EGAN, D.D.S., P.C.**  
Certified, American Board of Orthodontics

Hospital Road Professional Center  
250 Patchogue-Yaphank Road - Suite 14  
East Patchogue, NY 11772 (631) 289-3990

[www.TeethOnTheMove.com](http://www.TeethOnTheMove.com)

**STAGE DOOR Dance** SCHOOL OF

**Summer Dance Camp**

**Fall Registration**

25 PATCHOGUE-YAPHANK ROAD • EAST PATCHOGUE

**654-8858**

James & Diane Giattino

## FEATURED PERFORMER... PAUL NAKAUCHI

Paul Nakauchi has come full circle with *The King And I* - while still in college he was cast in the ensemble of the national tour that starred the legendary Yul Brynner, and just two years ago he played the King himself at the London Palladium opposite West End superstar, Elaine Paige. "Mr. Brynner was an icon, and it was quite an experience to see him on stage every night, I look back now and think, how fortunate I was to be there at age 22," Nakauchi said. In the most recent Broadway revival Nakauchi understudied the King for Lou Diamond Phillips, but in London he stepped into the role himself and played it for over a year.

Nakauchi studied voice at California State University at Northridge after growing up in a more pragmatic family - his father was an engineer, his mom a nurse. "I was just singing and playing the piano, I don't think they ever thought that I would make a career of it. But they couldn't argue once I was getting paid!" he said. His career has put him on television in guest spots on *ER*, *Knots Landing*, and *Star Trek: Deep Space Nine* and has taken him all over the world, most recently to Australia where he filmed *The Great Raid*, a Miramax film starring Benjamin Bratt, set to open in 2004.

The role of the King is one that Nakauchi can continue playing as he gets older, and he looks forward to informing his performances with the life experiences he will gain. "Being Japanese-American, the opportunities aren't as great," Nakauchi explained. "This role in particular is wonderful - the King is strong, virile, sexy, with authority and power. There are so few roles out there for Asian men that show that." The National Asian Theatre Company, which does classic American plays with Asian casts, gave him the opportunity to play Jamie Tyrone in Eugene O'Neill's *Long Day's Journey Into*



*Night*. "You don't get the chance to exercise your talent when you have a two-line walk-on as a Chinese delivery boy," said Nakauchi, "How you learn to act is by doing it, by being on stage, living those parts. When you don't get the opportunity to do those parts, you don't get the opportunity to improve."

On arriving in Bellport, Nakauchi saw a performance of Gateway's production of *Miss Saigon*, and went backstage after the show to catch up with Raul Aranas, whom he met when they were both in a touring production of the show. "I was really impressed at the quality of the show. It is not an easy show to do, and it all worked beautifully from the casting to the set.

Gateway should be proud of it," he said. One of Nakauchi's favorite roles was *The Engineer*, which he played in the first national tour. "I learned a great deal from that role, about timing and handling props," he explained.

As he continues on in his career he has been considering other aspects of the industry, like writing or directing, having been an actor he thinks he would make an insightful director, already understanding how an actor approaches a role. Whatever he decides to do next, it is certain to be infused with the thoughtfulness and depth that only comes from experience.

*For your financial freedom...*



Freedom Tax & Financial Services  
1690 Washington Ave.  
Corner - Veterans Memorial Hwy.  
Bohemia, NY 11716  
(631) 585-4000  
[www.freedomplanners.com](http://www.freedomplanners.com)



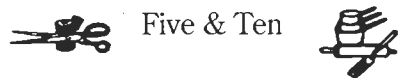
## Who's Who...

Competition, a benefit which continues to earn millions of dollars annually for Broadway Cares/Equity Fights AIDS. She is creator of the popular theatrical concert company, *Broadway Center Stage* ([www.broadwaycenterstage.com](http://www.broadwaycenterstage.com)) for which she has recorded the CDs, *Right As The Rain* and *Broadway Love Stories* and will be touring the newest production, *America's Singing Sweethearts*, the love story of Nelson Eddy and Jeanette MacDonald throughout the 2003/04 season. Suzanne holds degrees from The University of North Carolina-Chapel Hill and The Manhattan School of Music. She lives in New Jersey with her wonderful husband, Michael and their two extraordinary daughters Jean and Jessica.

**MYA JUNG** (*Ensemble*) is pleased to return to the Gateway playhouse after appearing in *Miss Saigon*. She continues her studies at the Seoul Institute of the Arts and the American Musical and Dramatic Academy (NYC), with musical theater as her principal area of concentration. She is also pursuing continued studies at the Brooklyn-Queens Conservatory of Music, where she has been a soloist with the Concert Chorus. Over the past year, Mya has performed on stage as a singer at several opera workshops and concerts. Thanks to family and Daniel for continued support and love.

### THE VARIETY MART

An Old Fashion



Five & Ten  
138 Main Street  
Bellport, New York 11713

631-286-2210

**KUMI KIMURA** (*Ensemble*) received a degree in International Economics from Seinan University in her native Japan. She appeared in *The King and I* with Downtown Cabaret Theatre, Paper Mill Playhouse and two other theatres; *Still on the Corner* for Castillo Theatre; and *The Earth and Me* for Shadow Box Theatre.

**SCOTT KITAJIMA** (*Kralahome/u/sKing*) is honored to join the cast of Gateway's *The King & I*. His credits include *The King (The King and I)*, *Ito (Mame)*, *Bazzard (The Mystery of Edwin Drood)*, *Dr. Lu Fong (Flower Drum Song)*, the Barber (*Making Tracks*), and the Sergeant (*The Prince and the Pauper*). Scott would like to thank God, his family, and all his friends for their continued support. I love you all!

**KUMIKO KOBAYASHI** (*Ensemble*) is happy to be at Gateway Playhouse this summer with this talented cast. Originally from Japan, she is training at Steps (dance) and H.B. Studios (Acting). Thanks to family and dear friends for their unconditional love and support.

**JONATHAN LEE** (*Phra Alack/Ensemble*) was born and raised in Brooklyn, NY. Jonathan has worked with various recording artists as a back up singer, dancer and choreographer. His Film/TV credits include *You've Got Mail*, *The View*, *The Rosie O'Donnell Show*, and *Guiding Light*. Theatre credits include *Once On This Island* (Daniel), *The Wiz* (Tinman), *West Side Story* (Bernardo), and *Miss Saigon*. He has worked with networks such as Disney, MTV, Nickelodeon, and VH1. Jonathan has also been seen or heard in several commercials, recordings, and print ads. Currently Jonathan teaches Hip-Hop at Steps on Broadway and DanceSpace Center in NYC. Jonathan is thrilled to be a part of Gateway's production of *The King & I*.

**SUMIE MAEDA** (*Ensemble*) originally from Japan, has performed with many dance companies and recording artists.

She has appeared in popular magazines, fashion shows, and television commercials, and just recently returned from the National Tour of *South Pacific*, playing Liat. Big love and thanks to family and friends for understanding and support. A.W.F.!

**AKEMI MATSUBARA** (*Ensemble*) is originally from Japan. Her credits include NBA New Jersey Nets Dance Team, the Bernadette Peters show, Notario Dance Co., and the Radio City Christmas Spectacular in NYC. She would like to thank her friends, family, and especially Yasuhiko for all their love and support.

**AKIKO MATSUMOTO** (*Ensemble*) a native of Japan, received her B.F.A. from Marymount Manhattan College, where she majored in dance. She has recently been rehearsing with Japan Performing Arts, a NYC based company, as well as performing at this spring's Japan Festival. She is thrilled to be making her debut at Gateway.

**MICHAEL MCKENZIE** (*Captain Orton/ Sir Edmund Ramsay*) is pleased to return to Gateway Playhouse where he played John Dickinson in 1776 (the musical, not the year). He has appeared on Broadway in *Waiting in the Wings*, *The Man Who Came to Dinner* and in *Eastern Standard*, and was a member of John Houseman's *The Acting Company*. Other stage credits include South Coast Repertory, Hartford Stage, Pittsburgh Public Theater, The Mark Taper Forum, The Goodman Theatre, Portland Stage, New Jersey Shakespeare Festival, and St. Louis Repertory. Television credits include *Law & Order*, *Hack*, *As the World Turns*, *Chicago Hope*, *Gabriel's Fire*, and a dozen episodes of *Babylon 5*. Thanks to Kari.

**PAUL NAKAUCHI** (*The King*) is no stranger to the role of the King having most recently performed the role on London's West End with Britain's leading lady of the musical stage, Elaine Paige. He began his professional career in this R&H classic with the legendary Yul

## Who's Who...

Brynnner. Since then he has performed the role of the "King" from Hawaii to New York as well as on Broadway in the Tony award winning 1996 revival with Lou Diamond Phillips and Donna Murphy. He has travelled around the U.S. in the 1st national tour of *Miss Saigon* where he understudied and played the role of the Engineer. His other Broadway credits include the musical *Chu Chem* as well as Off-Broadway in the National Asian Theater's production of Eugene O'Neill's classic *Long Day's Journey into Night*, where he played the role of Jamie. His T.V. credits include *E.R.*, *Murphy Brown*, *Star Trek: Deep Space Nine*, *Saturday Night Live*, *Knots Landing*, *The Young and the Restless*, and *General Hospital*. He can be seen in the soon to be released Miramax WWII epic *The Great Raid*.

**SAEKO NARUSE** (*Ensemble*) originally from Japan, arrived in America in 1998. She earned an Associates Degree in Dance from Dean College in 2000. Credits include: Cheer dancer for Arena football, Gladiators in NJ; Little Eva in *The King & I* at Downtown Cabaret Theatre; Bollywood Movie Award 2003. She now teaches pilates. She thanks her amazing family and friends for their unconditional love and support!

**YOON-JEONG SEONG** (*Tuptim*) was born in Korea. She was an active member of a number of musical performing groups in Korea. She is currently working on her



Ice Cream & Coffee Shoppe

75 East Main Street • Patchogue, NY 11772

Tel: 631.207.3023 Fax: 631.207.3123

Next to Patchogue Theatre



## Who's Who...

Master of Music degree at Brooklyn College. She has performed in numerous operas, cantatas and solo recitals. Recently, she appeared in the opera *Telephone* as Lucy.

**MICHIKO TAKEMASA** (*Ensemble*) is originally from Japan. Credits: *Miss Saigon* (NSMT), *The King & I* (Eliza), *Oliver!* (Nancy), *SAYONARA*, *Big River*, *The Fiddler on the Roof*, *Peter Pan*, *Mary Poppins*, and other ballet performances including *Swan Lake*, *The Sleeping Beauty*. Michiko sends love and thanks to her family and friends for their support.

**WEN ZHANG** (*Lady Thiang*) performed the role of Lady Thiang in the North American tour production of *The King & I* from 1998 to 2000. She also received the nomination for Best Actress in a Musical from Carbonell Award in Florida while she

performed the same role with *The King & I* at the Actors' Playhouse in Miami in spring of 2002. A native of China, Ms Zhang holds a Masters degree in Music from the University of Western Ontario in Canada. She has sung Suzuki in *Madama Butterfly* with Hong Kong Opera, Natchez Opera in MS, New Jersey Association of Verismo Opera, and Nutmeg Opera in Connecticut; Maddalena in *Riggoletto* and Carmen in *Carmen* with Toronto Opera Repertoire; Mercedes in *Carmen*, Cherubino in *Le Nozze di Figaro* with State Repertory Opera in NJ. She made her New York City debut as Dame Quickly in *Falstaff* with the New York Grand Opera in August 2001.

**PAUL ALLAN** (*Producer*) - For more than 20 years, Paul has produced successful shows spanning from the eastern end of Long Island to the other side of the world in the Orient. Having grown up in the theatrical family that started Gateway, Paul became involved in the theater at an early age. In fact, *The King and I* marks his 145th production at the Playhouse. In addition to his career as a producer, Paul co-founded a successful touring company, which mounted dozens of productions across the US and in countries as far away as Taiwan and Korea. Serving as technical director, sound engineer and master electrician for numerous productions when he first began in the theater industry provided Paul with invaluable knowledge and hands-on experience.

Drawing from that base allowed him to act as a consultant and advisor on the restoration and renovation of the Patchogue Theater, which under Gateway's control, reopened in 1998. The venue is now under the control of Patchogue Village, but Gateway still stages shows there several times each year, with *Miss Saigon* and *The King and I* being this season's featured performances.

**BOB DURKIN** (*Director/Choreographer*) before coming to Gateway Playhouse this season, recently completed very successful productions of *No, No, Nanette* and *Ain't Misbehavin* for the West Virginia Public Theater in Morgantown, WV. His work has been represented both nationally and internationally in tours of *Big River*, *Barry Manilow's Copacabana*, *Dreamgirls*, *Seven Brides for Seven Brothers*, *Anything Goes*, *Purlie*, *The Goodbye Girl*, *One mo' Time*, *Little Shop of Horrors*, *They're Playing our Song*, *Hello Dolly*, *Crazy for You*, *Molly Brown* and *Ain't Misbehavin*. In 1997 he was the recipient of the Connecticut critic's circle award for outstanding choreography for his work on *Seven Brides for Seven Brothers*. He was Tommy Tune's co-choreographer for the pre-Broadway workshops of *Easter Parade*, starring Tommy Tune and Sandy Duncan, both in Sydney, Australia and in New York City. He has also worked many years with the late Broadway Director, Phillip Oesterman. Bob's work has been seen by audiences in Brazil, Columbia,

Spain, Italy, Portugal, Germany, Austria, Finland, Ireland, Singapore, Hong Kong, Malaysia; Taiwan and all over the United States and in Canada. He is pleased to return to Gateway Playhouse where he began his career as a director and choreographer after having worked previously since childhood as dancer and actor. Bob thanks Harry and Libby Pomeran as well as Ruth, Stan, Robin and Paul Allan for all the wonderful memories of Gateway. As a family we definitely rock. He is pleased to be working with choreographer Sharon Halley for the first time and for hopefully numerous other times. He dedicates his work on *The King and I* to Gale Edwards for all of her support over the years.

**VINCENT TROVATO** (*Musical Director*) marks his third collaboration with the Gateway Playhouse with *The King & I* and he's thrilled to be back. Past credits include *Crazy For You*, *Evita*, *Sweeney Todd*, *Rags* (NYC Revival), *Annie*, *A Tale of Two Cities*, *Forbidden Broadway*, *Into The Woods*, *South Pacific*, *Nite Club Confidential*, *Anything Goes*, *42nd Street*, *Arthur: The Musical*, *Once On This Island*, *Closer Than Ever*, *A Chorus Line* and *The World Goes Round*. He has also had the pleasure of performing at Carnegie Hall in *A Tribute To Noel Coward* and has been the accompanist for Sandy Duncan. Vincent holds a Bachelors Degree from Boston University.

THE  
BANK OF  
NEW  
YORK  
LONG ISLAND REGION

24-hour ATM

Patricia Kelly, AVP

32 Station Road, Bellport,  
New York 11713

(631) 286-4200

Member FDIC 1986 The Bank of New York

## Chachama Grill

Upscale American Cuisine

655-8 Montauk Hwy.  
East Patchogue, NY 11772

Hours: Monday - Sunday 11:30 am - 10 pm  
1 mile east of the Patchogue Theatre in  
Waldbaums Shopping Center

Pre-fix available 4:00 - 6:00 pm \$35

631-758-7640

## HTM LANDSCAPING COMPANY

is the official landscaper of

*Gateway Playhouse*

all work done by owner  
Nicholas J. Harding

631-475-0636



631-654-8093

www.gudephotography.com

## Donato's RESTAURANT



"A Taste of Italy in  
the Heart of Patchogue"

114 W. MAIN ST., PATCHOGUE

SUN. FROM 1:30 PM; MON. & TUES. CLOSED;

WED.-SAT. FROM 4:30 PM

1 1/2 BLOCKS WEST OF NO. OCEAN AVE.

(631) 447-7766



# Acting School

Ten years ago, Robin Allan was sitting in her casting office in Los Angeles, across from many of today's young stars, then stars of tomorrow. "In LA., most of my projects focused on casting kids, from Ron Howard's PARENTHOOD to the remake of LORD OF THE FLIES. I was able to meet and actually coach Leonardo DiCaprio right through the network test for his first series-regular role on television. He had tremendous charm and charisma, even at age twelve, but didn't have the essence of the character he was auditioning for. It was worth it to give him some guidance before he met the folks at NBC."

Working with kids in drama was second nature to Robin, who attributes much of her instincts and talent to having grown up in the unique environment at Gateway. The theater's entire history is rooted in training young actors. Sally, David and Ruth Pomeran (Robin's aunt, uncle and mother) began the Playhouse while they were training at the local professional theatre in Bellport, no longer in operation. They brought home college classmates, including Robert Duvall, to work at their father's Gateway Hotel and perform for the guests. Gateway soon had a

boarding theater camp for teenagers that existed from the early '50's through the late '70's where they were immersed in all aspects of production as "actors-in-training". Throughout the '60's, Gateway was a talent farm for Columbia Pictures, and casting director Joyce Selznick would send her discoveries, including James Darren and David Carradine, to Bellport for experience. Studying, performing, teaching and directing before she was twenty, Robin felt strongly impelled to re-establish an educational environment at Gateway when she returned from CA in 1993. "In LA, I saw thousands of



kids with potential, but not many with good training," she said, "I thought, we still have a wonderful professional theater in our family, there's an empty barn theater on the premises where it all

began...why not give Long Island kids a leg up?" Her teachers are carefully chosen, all are working professionals, most of them from Manhattan. After putting ads in Backstage, she will read at least 200 resumes and interview about 20 people for each of the eight positions. "I pick the warmest people who truly love kids and love sharing the

art form, and I definitely look at their schooling," she explained. Class size is held to no more than 15 students, and courses are geared for all ages and experience, from basic acting classes for 5 year olds, up through advanced acting courses for teens and adults. Her most distinctive course is Musical Theatre Performance, which trains young people how to audition for musicals with confidence, using unique songs that showcase their voices and acting types. There is not another course like this offered anywhere on Long Island.

Many of Gateway's students have gone on to win scholarships and placement in prestigious colleges and universities, earning BFA's in Performing Arts. But the Acting School is not just for those seeking to make acting a vocation. Confidence, ease in communicating, discipline, focus, memorization and quick thinking are just some traits that can be developed. Tolerance, openness,

empathy, listening and understanding others, are social skills that can be attained through this study, for children and for adults.

Robin closed by saying, "A lot has been accomplished in ten years. I watch our kids grow into evolved thinkers and human beings. I see them become aware of what art truly is. I see the ones who are driven to do this as a career, take off and fly with strong wings. It is a blessing to be able to give to kids in this way, at a time in their lives when they need to believe in themselves." At Gateway, a tradition continues.

To read more about the Acting School, please visit our website at [www.gateway-playhouse.com](http://www.gateway-playhouse.com).

## ROE AGENCY INC. Insurance Since 1898

*Personal Insurance*  
*Commercial Insurance*  
*Property, Casualty*  
*Life*  
*Health*  
*Financial Services*

♦ 125 East Main Street ♦  
♦ Patchogue, New York 11772 ♦  
Phone: 631.475.4000  
Fax: 631.475.7648



### *Fine Dining Since 1980*

Dinners from 5:00 p.m.  
Sunday Brunch 12 - 3:00 p.m.  
Sunday Dinner 3 - 9:00 p.m.  
Closed Mondays

Four Blocks From The Gateway  
Playhouse and Ten Minutes From  
The Beautifully Renovated  
Patchogue Theater

Piano Bar Fri. & Sat. 8:30 - 12:30

Walter A. Roe, Proprietor  
David Bernatzsky, Executive Chef

108 So. Country Road, Bellport  
286-2650

10% Entrée Discount  
with Theatre Tickets

## BELLPORT JEWELERS

5 Bellport Lane, Bellport  
286-7700



**We Buy & Sell  
Highest Prices Paid!**

Jewelry, Coins, Stamps  
Repairs on all jewelry & watches on premises  
Shop online!  
[www.bellportgalleries.com](http://www.bellportgalleries.com)

## LYONS FUEL OIL CO. INC.

est. 1934

24 Hr.  
Service

Automatic  
Delivery

23 Station Road • Bellport, New York 11713  
Phone (631) 286-0395 • Fax (631) 286-0396



## Who's Who...

**SHARON R. HALLEY** (Choreography) began her career at the world-renowned St. Louis Municipal Opera where she had the unbelievable opportunity of working alongside every major musical theatre choreographer of the twentieth century, including: Agnes DeMille, Jack Cole, Michael Kidd, Bob Fosse, and Ron Field. When she arrived in New York she became the youngest member of the Broadway ensemble of *Cabaret*, followed by the Broadway companies of *Hellzapoppin'* and *Funny Girl*. Sharon danced along side Gene Kelly and Donald O'Connor. She left her performing days behind to become a choreographer in her own rite and went on to stage the original New York production of *Jerry's Girls* and the national tour which starred Carol Channing, Leslie Uggums and Andrea McArdle. Her other New York credits include *The New Moon*, *The Desert Song*, *The Merry Widow* (all at New York City

Opera) and *Elizabeth & Essex*, starring Estelle Parsons. She choreographed the National Tour of *Carousel* (with Rex Smith) and Regional Productions of: *Peter Pan*, *Bye Bye Birdie*, *South Pacific*, *Anything Goes*, *Can Can*, *Shenandoah*, *Music Man*, *Finian's Rainbow*, *Oklahoma!*, *Sweeney Todd*, *Fanny*, *Robert & Elizabeth*, *Oliver*, *The King and I*, *Mame*, *Where's Charlie*, *Brigadoon*, *Phantom of the Opera*, *Gigi*, *Guys and Dolls*, *Man of La Mancha*, *Damn Yankees* among others at some of the country's finest theatres, including: Paper Mill Playhouse, Sacramento Light Opera, Starlight, Theatre Under the Stars, The Fifth Avenue Theatre, McArter, and the Walnut Street Theater. She staged the world premiere of the Rick Hawkins' musical *Lunch*. PBS filmed her productions of *Showboat*, *The Merry Widow*, and *The New Moon* for Great Performances and she was the Resident Choreographer for the Robert Preston, Rosemary Harris Mini Series,

*Chisolm*. She has been a Guest Artist for the Canadian Government in Fredericton, New Brunswick and Theatre Des Westins in Berlin, Germany. She most recently choreographed *Damn Yankees* for Walnut Street Theater in Philadelphia and is teaching movement at Mannes College in New York. Ms Halley is the proud mother of Christopher, Gretchen, Amanda and Ebony.

**ROBIN JOY ALLAN** (Casting and Artistic Director) is grateful to have lived and breathed the arts all her life, beginning as a child actress and as a member of the rock band "The Right". Her background running the family business, broadened her scope, and after teaching, directing and producing, she embarked on a casting career that took her from the East to the West Coast. She was the Associate Casting Director on the feature films; *Parenthood*, *When Harry Met Sally*, *Lord of the Flies*, *Side*

*Out* and *Ghost*. She also cast several television series, pilots and MOW's. Along with her Artistic and Casting Director duties here, she is also the force behind Gateway's Acting School Division where she teaches and coaches the advanced classes. Her appreciation is for her family, her devotion is for her second family of students, her joy is in her daughter, Hayley Lynn. Her inspiration always, is her grandmother and grandfather Harry and Libby. Pamps, okay...so we're not selling parakeets these days, but you'd be happy with your "goldmine".

**JOVON E. SHUCK** (Production Stage Manager) Broadway: *Noises Off*, *The Graduate*; New York: *The Radio City Christmas Spectacular*, *The Seagull* (NY Shakespeare Festival/Public Theatre), *Lyrics and Lyricists Series* (92nd Street Y) and 3 Seasons with the Actors' Studio

# PARAMOUNT'S ORIGINAL LasersSpectacular

Sept. 13  
7:30 & 10:30

\$27.50

Featuring the music of

Pink Floyd

Laser  
Spectacular  
com

at the :  
Patchogue Theatre

Nov. 8—Mountain & Vanilla Fudge

Dec. 4—Irish Rovers Christmas Show

631-475-0121

Charge By Phone



HAUPPAUGE

2050 Expressway Drive South  
Hauppauge, NY 11788  
(631) 348-1400



Voted #1 in Guest Satisfaction  
in NY Metro Area

- FREE Deluxe Breakfast Bar
- FREE Pool & Fitness Center (Memberships Available)
- Jacuzzi Suites
- Group Rates Available
- Pool Parties

HolidayHauppaugeHotel.com



BROOKHAVEN

2000 North Ocean Ave.  
Farmingville, NY 11738  
(631) 732-7300



Hilton HHonors®

100% SATISFACTION GUARANTEED

- FREE Deluxe Breakfast Bar
- FREE Wireless Internet Access
- FREE Pool & Fitness Center (Memberships Available)
  - Jacuzzi Suites
- Group Rates Available
- Pool Parties

HamptonInnBrookhaven.com



## Who's Who...

Drama School Repertory Season; Touring: *Anne of Green Gables*, *Otherwise Known As Sheila the Great* (Arts Power); Regional: *Bye, Bye Birdie*, *Jesus Christ, Superstar* (Cherry County Playhouse), *You're A Good Man, Charlie Brown* (Lycian Center), *Guys & Dolls* (Bayview) as well as seasons with The Main Street Theatre and Shadow Lawn Theatre.

**MICHAEL BOYER** (Technical Director) He has designed over 250 sets for which have been seen from Stockholm to Diamond Head and from Key West to Hong Kong. Last year he designed *Fiddler On The Roof*, *Forbidden Broadway* and *Swing*. This season he designed *On The Town*. He is a member of Actors' Equity Association and United Scenic Artists, Local 829. For the past fifteen years whenever Mike has not been at Gateway, he has worked as set designer/technical director for the Tennessee Williams Theatre in Key West, Florida. A special thanks to the crew for all their hard work.

**GREG REIF** (Sound Designer) returns to Gateway for the fifth season as Sound Designer. He returns from Miami, FL where he was the head audio engineer for the Coconut Grove playhouse. Recently, Greg served as the engineer for the pre-Broadway tryout of *Urban Cowboy* in Miami, FL and now works at Sound Associates in Yonkers, NY.

**STEPHEN HOLLENBECK** (Costume Designer) This award winning costume designer has recently joined the Costume World team as the head costume designer. For over a decade, he was the Costume Designer for the Indianapolis Civic theatre where he won the prestigious Encord Award. His award winning designs include *Oklahoma*, *Pippin*, and *My Fair Lady*. His designs for *Into the Woods* won state, regional and national awards and Stephen was thrilled to be able to tour

Japan with this production. Stephen designed Gateway's recent production of *Miss Saigon* and is pleased to have the opportunity to once again work with Gateway Playhouse on this production of *The King and I*.

**MARCIA MADEIRA** (Lighting Designer) is pleased to design her 10th production for Gateway Playhouse. Her favorites are: *Swing*, *Jesus Christ Superstar*, *Forbidden Broadway*, *West Side Story*, *The Will Rogers Follies*, and *The Wizard of Oz*. Currently on tour is the Dallas Summer Musicals production of *The Will Rogers Follies* with Larry Gatlin. She received a Tony nomination and won the Drama Desk Award for *Nine* directed by Tommy Tune with Raul Julia. Other Broadway designs include *My One and Only* with Tommy Tune and Twiggy; *Marilyn, An American Fable* with Allison Reed and Scott Bakula; and *The Music Man* with Dick van Dyke. Off-Broadway designs include: *Cloud 9* directed by Tommy Tune; *Privates On Parade* with Jim Dale and Simon Jones directed by Larry Carpenter, choreography by Daniel Pelzig; and *The Transposed Heads* at Lincoln Center written and directed by Julie Taymor. Ms. Madeira has designed *La Boheme* for The Oklahoma City Philharmonic; *Don Carlos* for The Seattle Opera; *La Cenerentola* with Frederika von Stade for the LA Music Center Opera Co., and six tours for The National Lyric Opera Co. She has designed numerous regional theatre productions - for The Huntington Theatre, Boston; The Walnut Theatre, Philadelphia; Studio Arena Theatre, Buffalo; and The Alliance, Atlanta. Photos of Ms. Madeira's work may be seen at <http://www.geocities.com/mmadeira2000>.

# Bellport CHOWDER HOUSE



*An Eating and Drinking Tradition*

**FULL MENU**

**FULL BAR**

Open Daily For Lunch and Dinner  
Seven Days A Week

Sunday - Thursday till 11:00 p.m. Friday & Saturday till Midnight

**SPECIALIZING IN FRESH LOCAL SEAFOOD  
AT AFFORDABLE PRICES**

*Before and After the Show You'll Want to Meet and Eat At  
THE CHOWDER HOUSE*

**TAKEOUT**

**CATERING**

19 Bellport Lane • Bellport Village • 286-2343





offering a full spectrum of  
printing and creative services



**QUALITY PRINTING &  
GRAPHIC DESIGN**

56 Old Dock Road  
Yaphank, NY 11980  
Tel 631.345.2202  
Fax 631.345.0975

e-mail: mailbox@searlesgraphics.com  
www.searlesgraphics.com

## South Country Inn

*Fine Italian and  
Continental Cuisine*

**Moderately Priced Dinners  
Starting at \$12.95**

**Early Bird Specials Available  
Daily 3:30 - 6 PM**

**Tuesday & Wednesday  
Pasta Special  
\$10.95**

Complimentary glass of wine  
with your dinner when you  
present show tickets.

*A short drive from both theatres  
on South Country Road.  
Special attention to  
our theatre goers.*

Parties & theatre groups welcome.

*Stop for dessert or a cocktail  
after the show.*

**Open Tuesday - Thursday,  
Noon - 11 PM**

**Friday - Sunday,  
Noon - Midnight**

**Reservations recommended**

**558 South Country Rd.  
East Patchogue**

**758-1919**

## 2003 SUMMER MAINSTAGE

Sponsored by  
**TARGET**

*"In the same league as the  
best major regional and Off-  
Broadway theatres"*  
—Newsday

Long Wharf, Sag Harbor  
www.baystreet.org  
Box Office open daily  
11am-6pm

**631-725-9500**

**BAY STREET  
THEATRE**



**MAY 20 - JUNE 1**



**JUNE 10-29**



**JULY 8-27**



**AUGUST 5-31**

## ACTING AND MUSICAL THEATRE TRAINING

all levels of acting for all ages thru adult



**GATEWAY  
ACTING SCHOOL**

*Now Enrolling*



LEARN FROM THE PROFESSIONALS!

**286-9014**



## GATEWAY PLAYHOUSE STAFF

Executive Producers .....	Ruth and Stan Allan
Producer .....	Paul Allan
Associate Producer .....	Jeff Bellante
General Manager .....	Gale Edwards
Casting / Artistic Director .....	Robin Joy Allan
Company Manager .....	Stanley Schorr
Director .....	Bob Durkin
Choreographer .....	Sharon Halley
Musical Director .....	Vincent Trovato
Dance Captain .....	David Cho
Production Stage Manager .....	Jovon E. Shuck
Asst. Stage Manager .....	Krystle L. DiNicola
Set Designer .....	XuZheng He
Lighting Designer .....	Marcia Madeira
Sound Designer .....	Greg Reif
Costume Designer .....	Stephen Hollenbeck
Production Manager .....	Stacy Cooper
Technical Director .....	Michael Boyer
Asst. Technical Director .....	Jason Barroncini
Master Electrician .....	Brian Loesch
Asst. Master Electrician .....	Mike Gugliotti
Sound Engineer .....	Donny Searfoss
Costume Coordinator .....	Marianne Dominy
Wardrobe Assistants .....	Colleen Hanks, Chad Jason, Dean Logan, Kelly O'Brien
Prop Master .....	Cliff Andrea
Wig Stylist .....	Dean Logan
Scenic Painter .....	Brittany Fahner
Carpenters .....	Nathan Hillard, Dave Ruttera, Joseph Sturek
Interns .....	Zachary Blane, Tom Layou, Jose Santiago
Director of Group Sales .....	Annmarie Allan
Publicist .....	Linda Unger
Administrative Assistant .....	Justin Flagg
Casting Associate .....	Jessica O'Sickey
Box Office Manager .....	Jeff Bellante
Asst. Box Office Manager .....	Jeanette Holmes
House Managers .....	Kelly Ade, Laurie Parr
Box Office Staff .....	Erika Bennet, Melissa Boyle, Joanne Famiglietti, Danielle Frasca, Jodi Grega, Nadine Hazard, Greg Monteith, Michael Rumaker, Amy Prokop, Laura Werner
Front of House Manager .....	Bob Nofi
House Staff .....	Michael Gandolfo, Martin Laverty, Jose Moreno, Dayna Nofi, John Philpot, Marie Rachek, Jordan Sherlo, Rita Wehner
Maintenance .....	Don Harrison
Cleaning Contractor .....	Fiori Enterprises Inc.
Music Contractor .....	Jeff Hoffman
General Counsel .....	Ann L. Nowak & Associates
Production Photographer .....	Patrice Casanova
Sound Consultant .....	Dominic Sack
Trucking Supervisor .....	John Schroeder
Grounds Maintenance .....	HTM Landscaping Company

Gateway Playhouse would like to thank our volunteer staff for their dedication and support.  
It is much appreciated.

Marie Rachek - Head Usher

Ushers - Al Aberg, Missy Atchue, Carmela Aiosa, Maria Barba, Olga Belz, June Budd, Anne Burke, Betty Entress, Alice Friedman, Paul Friedman, Irene Fritz, Marian Harrison, Mary Lanier, Marge Littlefield, Carol Martino, Sue Nemet, Peter Pernice, Alice Rucker, Terry Seng, Michael Senic, Pat Siegel, Bella Triola, Carol Weinstein & Patricia Yundiga

IF YOU WOULD LIKE TO JOIN OUR VOLUNTEER STAFF CALL 286-6555

**WARNING** - The photographing or sound recording of any performance is strictly prohibited. Gateway Playhouse offers a wireless sound enhancement system for the hearing impaired. Inquire at the box office for more information.

**FIRE NOTICE** - The exit indicated by a red light and sign nearest to the seat you occupy, is the shortest route to the outside. In the event of fire or other emergency, please do NOT run. WALK to that Exit. However, under normal circumstances, when leaving the Theatre, use the center rear exits. SMOKING is prohibited in the BUILDING, as required by the Suffolk County NO SMOKING Ordinance. Smoking in any area designated "No Smoking" renders the offenders subject to a fine, or imprisonment, or both.

# It's back, to hypnotize us once again...

...with a soaring score of lush  
melodies and a  
thrilling tale  
of love.



Bradley Dean -  
Gateway's *The Scarlet Pimpernel*, 2001

Starring Bradley Dean from  
Gateway's *The Scarlet Pimpernel*  
and most recently seen in  
*Man of LaMancha* on Broadway

**SEPTEMBER 10-27**

**GROUP DISCOUNTS!**

**FOR TICKETS CALL 631.286.1133 OR 1-888-4TIXNOW**  
**OR LOG ON TO WWW.GATEWAYPLAYHOUSE.COM**

